

# Briton

## 2700 Series

Door controls



Fire Rated: Tested on fire door assemblies in accordance with Australian Standards, refer fire door manufacturer for specific approval details

The Briton 2700 Series incorporates cam action technology to reduce the resistance encountered when opening fire or smoke barrier doors.

The reduced force required to open fire doors makes entering and exiting buildings much easier for all users – including the elderly, those with physical disabilities and small children.

In contrast to a conventional rack and pinion door closer, the linear cam action principle is extremely efficient. The initial opening force decreases as the door opens, and the closer retains power and control to close the door afterwards.

The Briton 2700 Series offers easy opening and reliable closing, while meeting accessibility standards.

## Features

- Extruded aluminium body with cam action technology
- High quality hydraulic fluid with built-in temperature compensation (will operate effectively between -15 to +40 degrees Celcius)
- Adjustable backcheck and delayed action as standard
- Adjustable closer strength 1 - 5
- Separate closing speed and latch action adjustment
- Optional mechanical hold-open available: 80° - 120°angle
- Electroplated stainless steel finish
- 10 year warranty

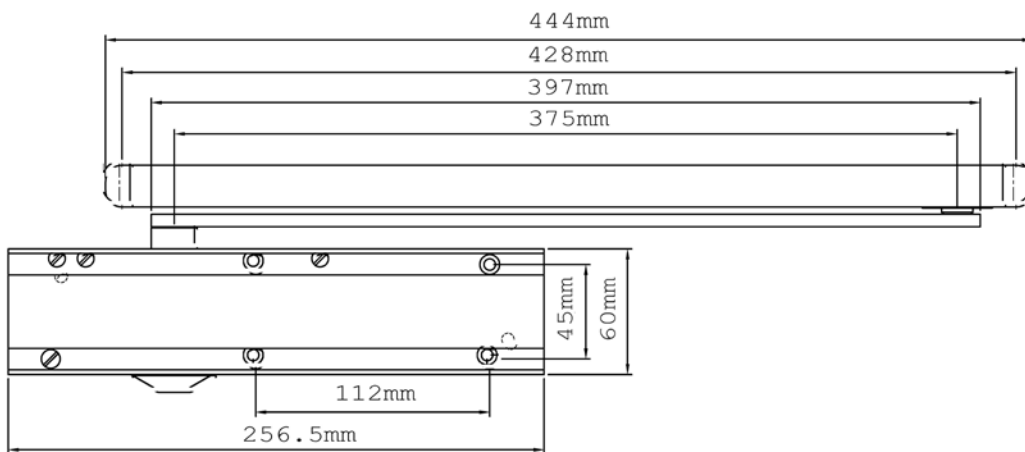
# Specification guide

Brand	Description	Model	Function	Finish		
Briton .....	BNT	Cam Action Closer Strength 1-5 Pull Side Delayed Action	2720BT	Track .....	T	Electroplated Stainless steel finish
		Cam Action Closer Strength 1-5 Push Side Delayed Action	2721BT			

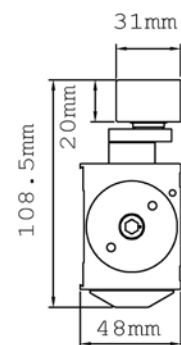
### Specifications

<b>Door type</b>	Timber or metal
<b>Door size</b>	Max width: 850mm – 1250mm Max weight: 40kg – 100kg
<b>Applications</b>	Regular – pull side mount Stop face – push side mount
<b>Adjustment controls</b>	Closing speed Latching speed Backcheck Delayed action
<b>Strength</b>	1-5 adjustable
<b>Finishes</b>	Electroplated stainless steel finish
<b>Warranty</b>	10 year mechanical

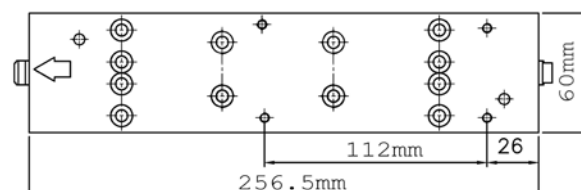
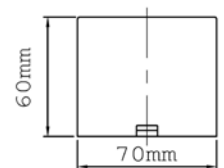
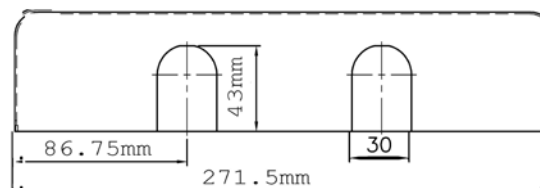
### Front/Arm



### Side



### Cover



## Regulating controls

The Briton 2700 has independent regulators to control:

<b>Closing speed</b>	Adjustment to increase or decrease the speed at which the door closes. This allows the appropriate momentum to close the door in a safe and secure manner. Closing speed adjustment operates from 70° to 10°
<b>Latching speed</b>	The latching speed allows the door to close quietly and firmly. It can be adjusted to increase or decrease the speed at which the door finally closes. This assists the final stage of the closing cycle to help overcome stubborn latch bolts or air pressure conditions. Alternatively the latching speed can be decreased to cushion the door into the frame. The latching speed adjustment operates from 10° to closing. A further option to increase the latching power is to reverse the arm bracket shoe
<b>Backcheck</b>	Adjustable hydraulic backcheck provides a cushioning effect to prevent damage to the closer, door and frame when the door is forcibly thrown open. The backcheck adjustment allows the level of resistance in the latter stage of opening to be set at the level required. Backcheck is effective from 75°. Backcheck is a requirement for all fire rated closers
<b>Delayed Action</b>	Adjustable delayed action The closer can be set to close more slowly, giving people extra time to pass through the doorway. Adjustable between 70° and 120°

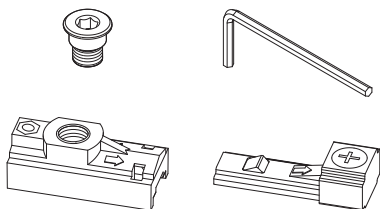
## Functions

<b>Regular</b>	For applications where the door must fully close after each opening
<b>Hold open</b>	Suitable for doors where the door may need to be left in a hold open position. The hold open function can be set to hold open at a single point. Hold open closers can not be used on fire doors

## 2700 Series Accessories

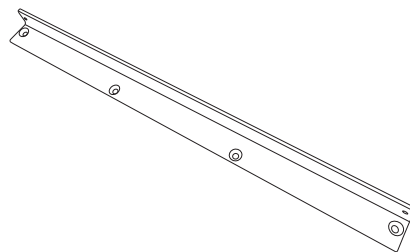
### Hold open conversion kit

Allows doors to be held open at desired position. Not to be used on fire doors.



### Angle mounting bracket

When mounting closers to the push side



### Cushion limit stay

Optional cushion limit stay for standard applications to assist slowing door in opening cycle

